



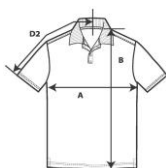
6280

Adult Double Pique Polo



DETAILS

Weight	210.0 G/SqM
Content	100% Combed Ring Spun Cotton
Yarn Count	30/1
Features	Semi-fitted Side seam and 2.5 cm side vents Rib knit contoured collar and hemmed sleeves Two dyed to match buttons (some colours have a contrast colour inside placket and collar) Woven label Care label Oeko-Tex® Standard 100 Certified
Sizes	S-2XL
Case Packs	S - 2XL 36 PIECES
Colours	17
SKU's	85



SPECIFICATIONS

Centimeters	Tol-	Tol+	S	M	L	XL	2XL
Chest/Pecho (A)	1.905	1.905	50.165	53.340	55.880	59.055	62.230
Length from HPS/Largo desde HPS (B)	2.540	2.540	69.850	73.660	76.200	78.740	81.280
Sleeve length (centre back to incl.cuffs)	2.540	2.540	44.450	46.990	48.895	54.610	57.150
Inches	Tol-	Tol+	S	M	L	XL	2XL
Chest/Pecho (A)	0.750	0.750	19.750	21.000	22.000	23.250	24.500
Length from HPS/Largo desde HPS (B)	1.000	1.000	27.500	29.000	30.000	31.000	32.000
Sleeve length (centre back to incl.cuffs)	0.750	0.750	17.500	18.500	19.250	21.500	22.500

S-2XL

COLOURS	Code	Comments
Azalea	071	
Black	036	
Black / Charcoal	KB036	
Cobblestone	335	
Forest Green	033	
Heather Grey	346	90% Ring Spun Cotton, 10% Polyester
Key Lime	332	
Lemon Zest	331	
Mandarin Orange	315	
Maroon	327	
Navy	032	
Pool Blue	310	
Red	338	
Red / Navy	KA338	
Royal Blue	051	
White	030	
White / Navy	KA030	

CHANGES

Total Net Change 0 SKU's